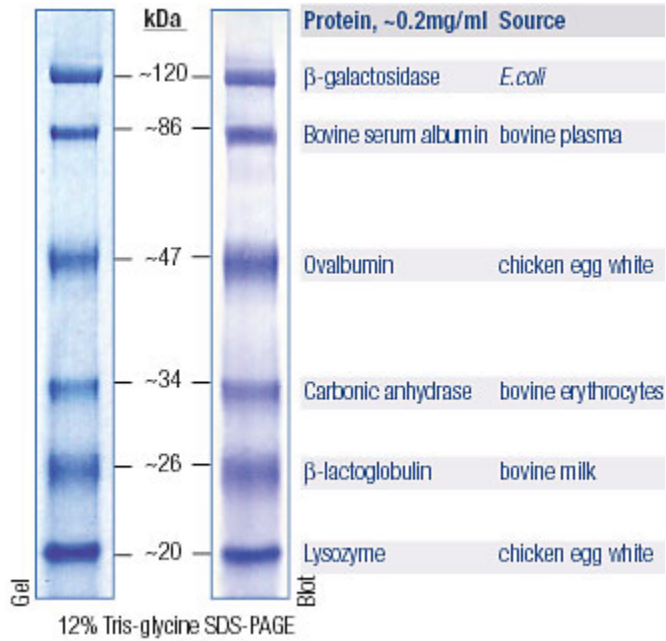


# Enzymax, LLC

A345 ASTeCC Building, University of Kentucky, Lexington, KY 40506  
Tel. 859-257-2300 ext. 280; Fax: 859-257-2489; [www.enzymax.net](http://www.enzymax.net)

**Prestained Protein Marker, Broad Range with no Red Bands (20kDa-120kDa),  
2x250ul for 100 mini gel applications, 5ul/well.**



**Molecular Biology**  
**FOR RESEARCH USE ONLY**