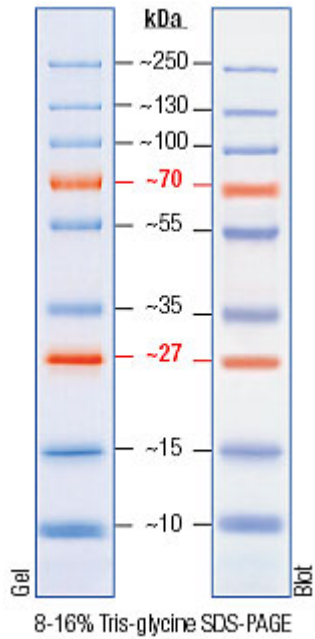


Enzymax, LLC

A345 ASTeCC Building, University of Kentucky, Lexington, KY 40506
Tel. 859-257-2300 ext. 280; Fax: 859-257-2489; www.enzymax.net

Prestained Protein Marker, Broad Range with 2 Red Bands (10kDa -250kDa), 2x250ul for 100 mini gel applications, 5ul/well.



Molecular Biology
FOR RESEARCH USE ONLY