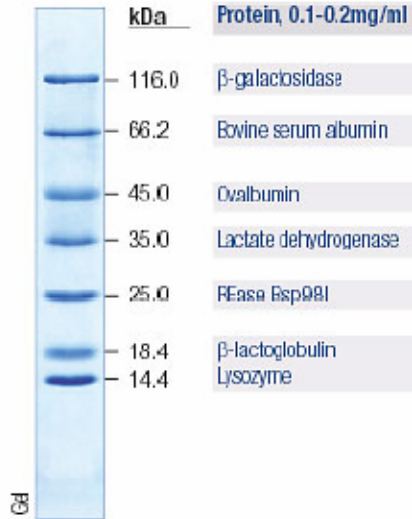


Enzymax, LLC

A345 ASTeCC Building, University of Kentucky, Lexington, KY 40506
Tel. 859-257-2300 ext. 280; Fax: 859-257-2489; www.enzymax.net

Unstained Protein Marker, Broad Range II (14.4-116kDa), 2x1000ul for 400 mini gel applications, 5ul/well.



12% SDS-PAGE gel stained with Coomassie blue